

Figure 686 00 KHS-VAV Maximum flow isolating ball valve with servo drive, 24 Volt AC / DC

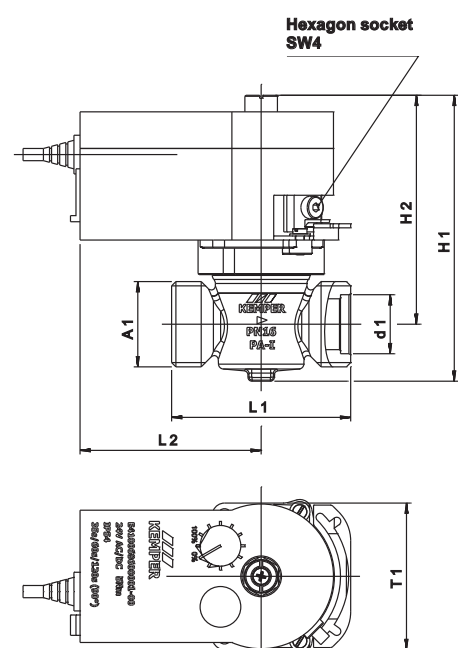
Technical properties
Medium-contacting parts made of gunmetal
Removable head part 'Top Entry'
VAV DIN-/DVGW approved according to W 570 and DIN EN 13828
Pressure-impact free operation
Pressure stage PN 16
Simple maintenance when installed
Stagnant-zone-free
Connection to the KHS-Logic control system with position feedback
0...10 V position feedback, 0 V = drive closed / 10 V = drive completely open
Supply voltage 24 V AC / DC, Connection cable 1.2 m, 5 x 0.5 mm ²
Power consumption 5 V / 9 VA
Maintenance-free transmission
Perm. ambient temperature up to 55 °C
Protection class: IP54



686 00 KHS-VAV Maximum flow isolating ball valve with servo drive for KHS-Logic, 24 Volts

Product description / Tender text
KEMPER KHS-VAV Maximum flow isolating ball valve with servo drive for KHS-Logic control system, especially suitable for the KEMPER Hygiene System KHS, consisting of:
Maximum flow isolating ball valve, compliant with DIN EN 13828 corresponds to the drinking water hygiene requirements according to DVGW W 570, made entirely from gunmetal, resistant against aggressive water, brass-free in areas that touch fluids, with maintenance-free spindle sealing, 'Top Entry' head part can be removed from top, made with EPDM gasket body with rotating-supported gunmetal closing body, stagnant-zone-free, can be rotated 90°, with DIN/DVGW and soundproofing certificate, rated pressure PN 16 and
Servo drive, for connection to the KHS-Logic control system as 2-point controller with valve feedback completely open and completely closed, Supply voltage 24 V AC / DC, runtime 90° 30 sec., with step motor and maintenance-free transmission, with self-centring axle adapter and fixed flange for installation on the valve, connection cable 1.2 m, 5 x 0.50 mm ² ,
both sides with male thread for universal connection to fittings for copper, steel, stainless steel, multilayer duplex tubes, from DN 15 (3/4") to DN 32 (1 1/2")

Dimensions					
Nominal width	DN	15	20	25	32
Overall height (H1)	mm	135	135	140.5	146.5
Overall height (H2)	mm	110	110	112.5	115.5
Length (L1)	mm	68	73	88	93
Length (L2)	mm	89	89	89	89
Connection dimension (A1)		G 3/4	G 1	G 1 1/4	G 1 1/2
Depth (T1)	mm	72	72	72	72
Diameter (d1)	mm	18	22.5	29	35



Materials	
Housing, interior head part	Gunmetal
Spindle	Gunmetal
Seal element	EPDM
Coupling	Brass
Drive housing	Self-extinguishing plastic
Axis adapter	Steel
Flange adapter	PA

**Figure 686 00 KHS-VAV Maximum flow isolating ball valve
with servo drive, 24 Volt AC / DC**

Technical information

Area of application

- Install the KHS-VAV in drinking water installations for the KEMPER hygiene system in order to maintain operation as intended in CDW and WDW as well as in the maintenance, stop and pressure limiting valve (in accordance with DIN 1988-2).
- The valve can be used together with the KEMPER KHS-Logic control system or for building control systems.
- It is referred to as the A-Valve in the KHS-Logic control system.
- The valve is not suited to restricting volume flows, so its intended use is solely for FULL OPENING or FULL CLOSING.

Maintenance

- According to DIN 1988-1, the operator has to inspect annually.
- Please refer to the installation and operating instructions for further information.