

**Figure 686 04 KHS-VAV Maximum flow isolating ball valve with servo drive, 230 Volt**

Technical properties
Medium-contacting parts made of gunmetal
Removable head part 'Top Entry'
VAV DIN-/DVGW approved according to W 570 and DIN EN 13828
Pressure-impact free operation
Pressure stage PN 16
Simple maintenance when installed
Stagnant-zone-free
Connection as a 2-point controller
Supply voltage 230 V, Connection cable 1.2 m, 3 x 0.75 mm <sup>2</sup>
Maintenance-free transmission
Perm. ambient temperature up to 55 °C
Protection class: IP54



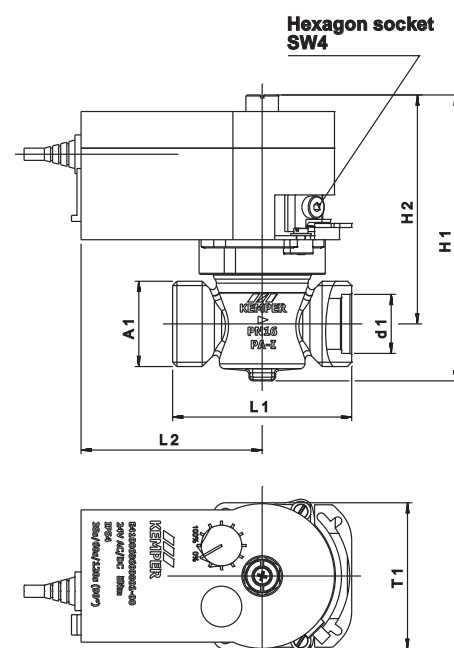
**686 04 KHS-VAV Maximum flow isolating ball valve with servo drive for KHS Timer, 230 Volts**

Product description / Tender text
<b>KEMPER KHS-VAV Maximum flow isolating ball valve with servo drive</b> , consisting of:
<b>Maximum flow isolating ball valve</b> , compliant with DIN EN 13828 corresponds to the drinking water hygiene requirements according to DVGW W 570, made entirely from gunmetal, resistant against aggressive water, brass-free in areas that touch fluids, with maintenance-free spindle sealing, 'Top Entry' head part can be removed from top, made with EPDM gasket body with rotating-supported gunmetal closing body, stagnant-zone-free, can be rotated 90°, with DIN/DVGW and soundproofing certificate, rated pressure PN 16 and
<b>Servo drive</b> , for controller with switching output, 2-point control, <b>Supply voltage 230 V AC</b> , Laufzeit 90° 30 sec., runtime 90° 30 sec., with synchronous motor and maintenance-free transmission, electronic final position detection and motor switch-off via a timer in the unit, with self-centring axis adapter and fixed flange for mounting on the valve, connection cable 1.2 m, 3 x 0.75 mm <sup>2</sup>
both sides with male thread to universal connection to fittings for copper, steel, stainless steel and multilayer duplex tubes, from DN 15 (3/4") to DN 32 (1 1/2")

- For more information please see reverse side

Dimensions					
Nominal width	DN	15	20	25	32
Overall height (H1)	mm	135	135	140,5	146,5
Overall height (H2)	mm	110	110	112,5	115,5
Length (L1)	mm	68	73	88	93
Length (L2)	mm	89	89	89	89
Connection dimension (A1)		G 3/4	G 1	G 1 1/4	G 1 1/2
Bautiefe (T1)	mm	72	72	72	72
Durchmesser (d1)	mm	18	22,5	29	35

Materials	
Housing, interior head part	Gunmetal
Spindle	Gunmetal
Seal element	EPDM
Coupling	Brass
Drive housing	Self-extinguishing plastic
Axis adapter	Steel
Flange adapter	PA



**Figure 686 04 KHS-VAV Maximum flow isolating ball valve with servo drive, 230 Volt**

<b>Technical information</b>
<p><b>Area of application</b></p> <ul style="list-style-type: none"><li>- KHS-VAV for use in drinking water installations for the KEMPER Hygiene System.</li><li>- Use as maintenance, stop and pressure limiting valve (in accordance with DIN 1988-2).</li> <li>- Triggers the valve via the BMS or with the KEMPER KHS timer set.</li></ul> <p><b>Maintenance</b></p> <ul style="list-style-type: none"><li>- According to DIN 1988-1, the operator has to inspect annually.</li><li>- Please refer to the installation and operating instructions for further information.</li></ul>